



## The All New Westerbeke EFI Series

### Continuous Quality Power

Introducing the Westerbeke EFI Series of gasoline generators. Combining innovative technology and simplicity of design, Westerbeke has managed, once again, to set the standard in marine power generation.

The EFI Series is powered by an industrial three-cylinder gas engine. Like most Westerbeke gensets, the EFI Series incorporates true one-side servicing for complete access to all serviceable components.

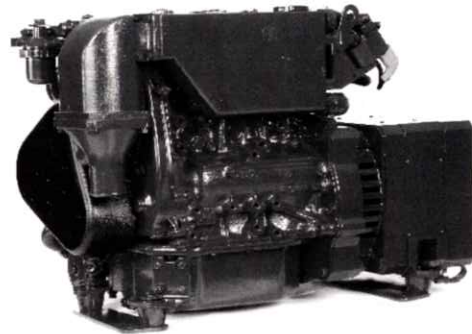
All EFI generators feature an electronic fuel injection system. Designed by Westerbeke, this system is consistently controlled and monitored by an internal microcontroller which keeps careful track of all vital engine parameters such as engine load, engine speed and injection timing. This results in the ability to go from no load to full load instantly with hardly a ripple in frequency or voltage.

The compact EFI Series is perfect for smaller boats with limited space and heavy electrical loads. They have been designed with the boater in mind. All Westerbeke generators are backed by a five year limited warranty and by a worldwide network of master distributors and dealers.

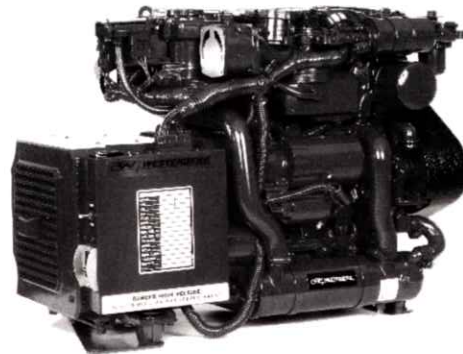
The EFI Series from Westerbeke, continuous quality power.

### Many features are standard equipment

- Fresh water cooling
- Vibration mounts
- 90° water injected elbow
- Coolant recovery tank
- Battery charging
- Safety stop switch
- Drip tray
- Belt guard
- Belt-driven sea water pump
- Lube oil drain hose
- Safety shut-downs — hi-coolant temperature, low oil pressure, hi-exhaust temperature
- Operator's manual and parts list
- "CE" Mark
- A.C. Circuit Breaker
- CARB certified
- EPA certified



7.2 BCGTE  
Gasoline Generator



7.2 BCGTE  
Gasoline Generator

### Unit Dimensions

**Length** 27.7" (703.6 mm)

**Width** 13.8" (350.5 mm)

**Height** 19.4" (492.8 mm)

**Dry Weight** 276 lbs. (125.2 kg)

*See other side for more dimension information  
Photographs may show optional equipment*

### Generator Design

**DESIGN:** Brushless, two pole, revolving field.  
**VOLTAGE REGULATION:** +/- 5% no load to full load.  
**FREQUENCY REGULATION:** .5 Hz (.83%) no load to full load.  
**INSULATION:** Class "H", as defined by NEMA MG1-1.65.

**TEMPERATURE RISE:** Within NEMA MG1-22.40 definition when operating at full load.  
**COOLING:** Cast centrifugal blower, direct connected.  
**ELECTROMAGNETIC INTERFERENCE LEVEL:** Meets EMC directive 89/336/EEC, amended by 92/31/EEC and 93/68/EEC.

| Model      | Electrical Characteristics |      |       |       | Ratings |              |     | Engine |        |
|------------|----------------------------|------|-------|-------|---------|--------------|-----|--------|--------|
|            | Volts                      | Amps | Hertz | Phase | Wire    | Power Factor | KW  | RPM    | Start  |
| 7.2 BCGTE* | 120**                      | 60   | 60    | 1     | 4       | 1.0          | 7.2 | 3600   | Remote |
| 6.0 BCGTE* | 230                        | 26.2 | 50    | 1     | 4       | 1.0          | 6.0 | 3000   | Remote |

\* Adjustable for 50 or 60 hertz.

\*\*Consult factory for 120/240 volt application

### Specifications

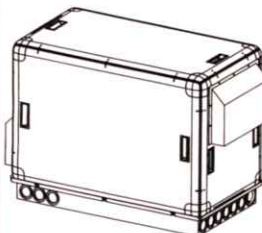
|                            |                                      |
|----------------------------|--------------------------------------|
| Number of cylinders        | 3 Cylinder vertical in-line          |
| Type                       | 4 cycle                              |
| Displacement               | 40.3 cu. in. (.66 liter)             |
| Bore and stroke            | 2.56" x 2.61" (65.0mm x 66.3 mm)     |
| Compression ratio          | 9.8:1                                |
| Rated rpm                  | 60 Hz – 3600 rpm<br>50 Hz – 3000 rpm |
| HP @ 3600 rpm              | 12.07 HP                             |
| Maximum angle of operation | Not to exceed 25° in all directions  |
| Exhaust elbow conn.        | 2.0" OD (57.15mm)                    |
| Sea water conn.            | .75" OD (19.05mm)                    |
| Dry weight                 | 276 lbs (125.4 kg)                   |
| Combustion system          | Semi-spherical type                  |
| Aspiration                 | Naturally aspirated                  |
| Lubrication system         | Forced pump                          |
| Cooling system             | 3.5 quarts (3.3 liter)               |
| Full load fuel consumption | 0.88 GPH (3.3 LPH) (approx.)         |
| Fuel injection             | Electronic                           |
| Governor                   | Electronic                           |
| Fuel Filter                | Secondary, replaceable type          |
| Lube oil filter            | Full flow, spin-on element           |
| Lubricant capacity         | 2.7 quarts (2.6 liters)              |
| Fuel transfer pump         | Hi-pressure electric type            |
| Fuel supply piping         | 1/2" ID (12.70 mm)                   |
| Fuel return piping         | 3/8" ID (9.52 mm)                    |
| Starting motor             | 12 volt, 1.2 kw                      |
| Battery charging           | 17 amps, integral electric type      |
| Cold cranking amps         | 120 amps @ 70 degrees F              |
| Electrical system          | 12 volts DC, negative ground         |

### Construction - Engine Components

|                  |  |
|------------------|--|
| Cylinder head    | Aluminum                               |
| Cylinder block   | Cast Iron                              |
| Crankshaft       | Forged crankshaft, four main bearings  |
| Valves           | Overhead, rotating type                |
| Fuel System      | Electronic fuel injection              |
| Cooling system   | Fresh water-cooled with heat exchanger |
| Exhaust manifold | Cast aluminum, fresh water-cooled      |

### Optional Equipment

- Remote start-stop panel
- Ship-shore switch
- Hydro-hush muffler and fittings
- "A" on-board spare parts kits; "B" extended cruising spare parts kit
- Anti-siphon valve for overboard cooling water discharge
- Technical Manual
- Sound Guard sound enclosure

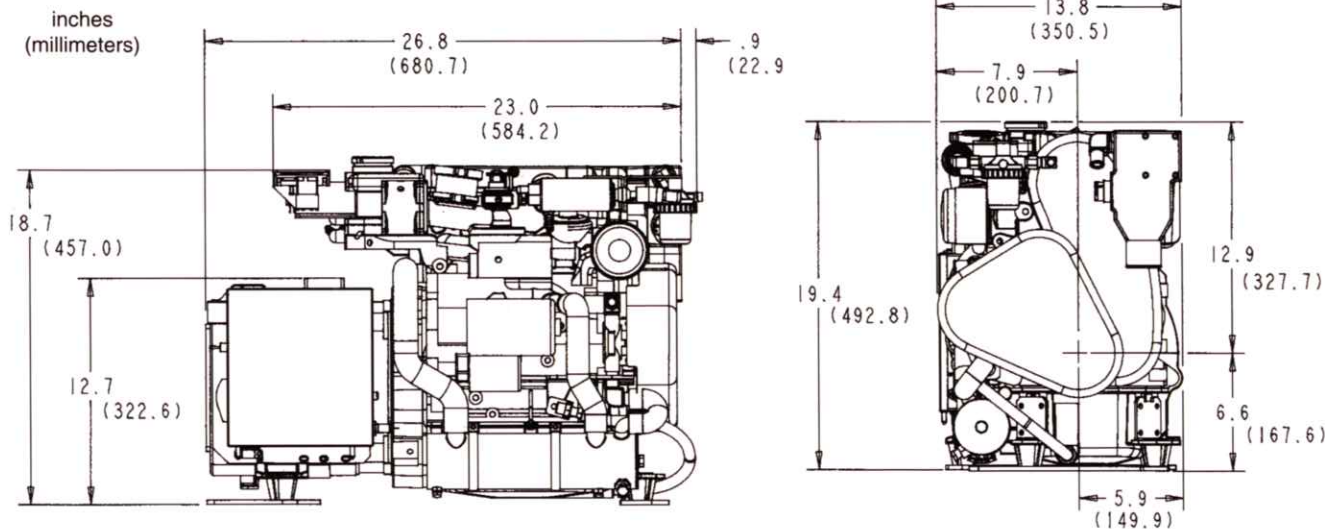


Optional Sound Guard enclosure provides optimum silencing for the generator. Ruggedly constructed with all panels removable for easy servicing and maintenance.

Length - 35.48in (901.19mm)  
 Width - 17.45in (443.23mm)  
 Height - 23.23 in (590.04mm)  
 Weight - 40 lbs.(18.14kg)

Sound Guard base is standard on all BCGTE and BCGTC models

### Basic Dimensions



Drawings are for reference only and should not be used for installation. Detailed installation drawings are available upon request.